



SUBMITTAL DE INFORMACION TECNICA PARA SERPENTINES COMERCIALES

		FECHA
PROYECTO		
INGENIERO CONSULTOR		
MANUFACTURERO		
DESCRIPCION DEL PRODUCTO	DESIGNACION DEL SERPENTIN : MODELO : TIPO : CANTIDAD : CAPACIDAD NOMINAL, TONS : GPM : CIRCUITOS : VOLTAJE : PESO : DIMENSIONES :	
SECCION DE LA ESPECIFICACION		
DESIGNACION DE LA UNIDAD		
MANUFACTURERO	CAP - COMMERCIAL AIRE PRODUCTS	
ACCION DE APROBACION	<input type="checkbox"/>	APROBADO:
	<input type="checkbox"/>	APROBADO CON NOTAS:
	<input type="checkbox"/>	NO APROBADO, FAVOR RESOMETER
FECHA Y FIRMA DE LA ACCION		

Información General

Nombre del proyecto :
Modelo de la Unidad :
Designación de la
unidad :
Fecha :

Información del Abanico

Tipo de abanico : Centrífugo
Tipo de Motor : ODP
Voltaje del Motor :
Motor Hp :
Motor RPM :
CFM de Diseño : SCFM
ESP de diseño : inch w.g.
ISP : inch w.g.
SP TOTAL : inch w.g.

Coil Performance

Tipo de aletas :
Alto/Largo de Aletas : In
Filas/FPI :
Circuitos :
Cap. Total : Btu/hr
Cap. Sensible : Btu/hr
DB/WB de Salida : °F
Velocidad de Cara : SFPM
APD Estándar : in.w.c.
Temp de Salida
Líquido : °F
Flujo de Líquido : GPM
PD de Líquido : ft H2O
PD de Refrigerante : ft H2O
Velocidad de Fluido : FPS
Tamaño de conexión : in

Especial Notes:

Capacidad de los Serpentes es
De acuerdo con el estándar 410 AHRI
Serpentes no Certificados en AHRI

Sistema de Aire

Flujo de Aire : SCFM
Altitud : Feet
Ent DB/WB : °F
Cap Requerida : Btu/Hr
LDB/LWB Req'd : °F

Información del Serpente

Temp de Entrada : °F
Temp de salida : °F
Razón de Flujo : GPM

Serpentes de DX

Refrigerante :
Temp Líquido : °F
Temp Evap : °F

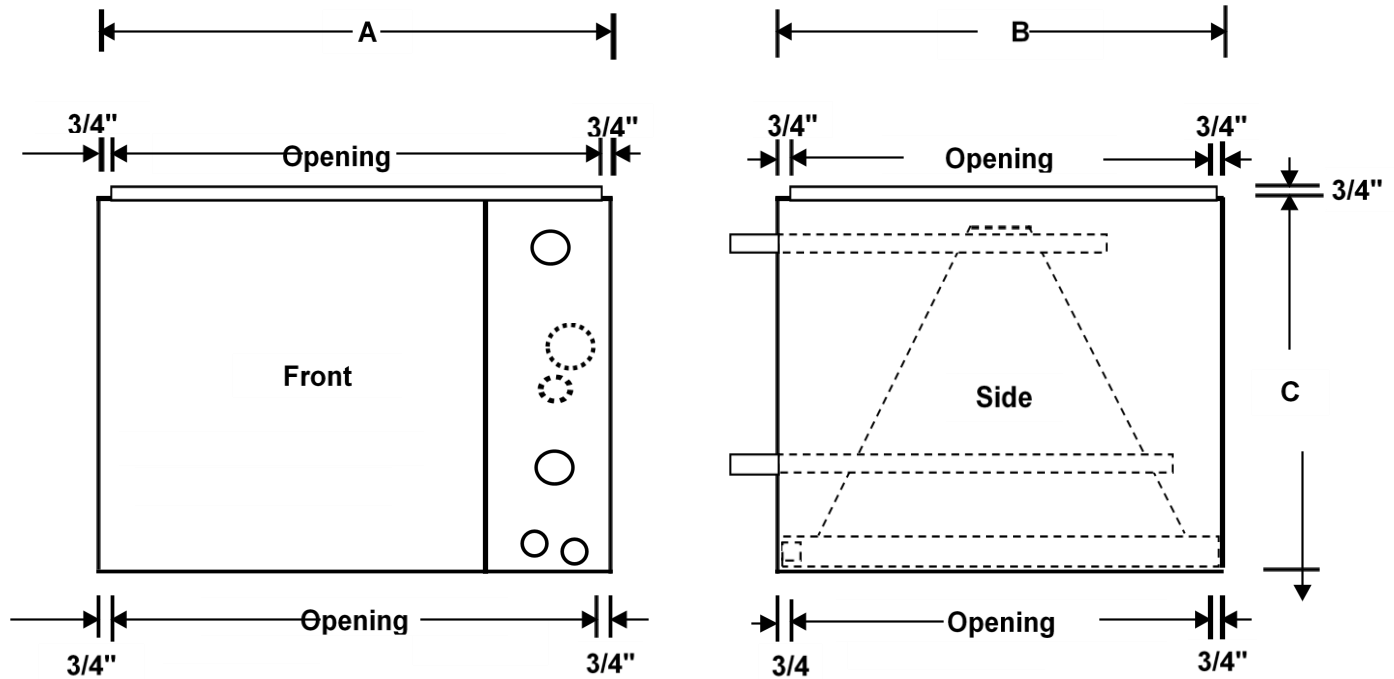
Notas Adicionales de Construcción

Coil Coating :
Mat's de gabinete :
Tipo de gabinete :
Mat's de conexión :
Tipo de conexión :

Accesorios de la Unidad

Tipo de caja de mezcla :
Plenum de Suministro :
Plenum de Retorno :
Filtros Plisados :

Serpentines Tipo A "DX R-410A & R- 22" comerciales



Model Size	Width A	Depth B	Height C	Face Area	FPI	Tube O.D.	Suc O.D.	Liquid O.D.	Refr. Circuits
CCDXA-072-*	29"	21"	20-1/4"	6.67	10	1/2"	7/8"	1/2"	Single
CCDXA-072D-*	29"	21"	20-1/4"	6.67	10	1/2"	(2) 7/8"	(2) 1/2"	Dual
CCDXA-090-*	45"	21"	20-1/4"	8.89	10	1/2"	1-3/8"	5/8"	Single
CCDXA-090D-*	45"	21"	20-1/4"	8.89	10	1/2"	(2) 1-3/8"	(2) 5/8"	Dual
CCDXA-120-*	53"	21"	23-1/4"	11.25	10	1/2"	1-3/8"	5/8"	Single
CCDXA-120D-*	53"	21"	23-1/4"	11.25	10	1/2"	(2) 1-3/8"	(2) 5/8"	Dual
CCDXA-180-*	68"	21"	23-1/4"	18.75	10	1/2"	1-5/8"	5/8"	Single
CCDXA-180D-*	68"	21"	23-1/4"	18.75	10	1/2"	(2) 1-5/8"	(2) 5/8"	Dual
CCDXA-240-*	68"	21"	25-1/4"	20.83	10	1/2"	1-5/8"	5/8"	Single
CCDXA-240D-*	68"	21"	25-1/4"	20.83	10	1/2"	(2) 1-5/8"	(2) 5/8"	Dual

NOTE: AÑADIR -2 PARA R-22 TXV Y -4 PARA R-410 TXV CUANDO ORDENE

Características Estándar:

- Listado U.L.
- Gabinete aislado completo
- Paneles del frente removibles
- Gabinetes galvanizados Repujados en GA 20
- Conexiones y drenajes a la derecha
- TVX Instalada en Fábrica
- Serpentes se prueban a 500 PSI, se sellan y presurizan con Nitrógeno
- Bandeja de drenaje de acero inoxidable

Características Opcionales:

- Doble circuito
- Válvula de cheque (Operación de Bomba de Calor)

Serpentines Comerciales "DX R-410A" Tipo A

6 Ton W/4 Row DX R-410A Coil										
85° F EDB / 71° F EWB										
CFM	Suct	APD	Total	Sens	LA Temp.					
	Temp.				FV	Cap	Cap	DB °F	WB °F	
1500	35 °F	0.12	109,346	61,509	47.5	46.6				
	40 °F						95,881	55,358	51.3	49.9
	45 °F						82,871	49,208	55.1	53.5
	50 °F						67,813	43,057	58.8	57.4
2000	35 °F	0.19	131,129	74,324	51.1	49.6				
	40 °F						116,695	67,660	54.1	52.5
	45 °F						99,982	60,143	57.5	55.6
	50 °F						81,686	52,625	60.9	58.8
2500	35 °F	0.28	152,702	87,765	53.1	51.5				
	40 °F						132,973	76,887	56.9	54.6
	45 °F						113,477	70,052	59.4	57.1
	50 °F						93,301	62,791	62.1	59.9

7.5 Ton W/4 Row DX R-410A Coil										
85° F EDB / 71° F EWB										
CFM	Suct	APD	Total	Sens	LA Temp.					
	Temp.				FV	Cap	Cap	DB °F	WB °F	
2500	35 °F	0.17	171,538	96,108	49.8	48.3				
	40 °F						150,103	86,498	53.4	51.9
	45 °F						126,024	75,178	57.5	55.6
	50 °F						99,168	65,181	60.9	59.1
3000	35 °F	0.24	194,202	110,204	51.4	50.1				
	40 °F						169,051	99,184	54.8	53.2
	45 °F						141,783	86,113	58.8	56.6
	50 °F						111,861	75,349	62.1	59.9
3500	35 °F	0.31	214,409	122,592	53.1	51.4				
	40 °F						186,480	108,987	56.5	54.5
	45 °F						155,892	95,681	60.1	57.5
	50 °F						122,355	83,721	63.1	60.6

10 Ton W/4 Row DX R-410A Coil										
85° F EDB / 71° F EWB										
CFM	Suct	APD	Total	Sens	LA Temp.					
	Temp.				FV	Cap	Cap	DB °F	WB °F	
3000	35 °F	0.16	210,350	117,893	49.1	48.1				
	40 °F						184,805	106,104	52.7	51.1
	45 °F						157,933	94,314	56.3	54.5
	50 °F						129,395	82,525	59.8	58.1
4000	35 °F	0.26	254,460	143,522	52.2	50.4				
	40 °F						222,739	129,170	55.5	53.4
	45 °F						188,898	114,818	58.8	56.4
	50 °F						153,628	100,465	62.1	59.5
5000	35 °F	0.38	291,107	166,588	54.5	52.5				
	40 °F						255,077	149,929	57.6	55.3
	45 °F						214,697	133,270	60.6	58.1
	50 °F						174,629	119,602	63.1	60.6

6 Ton W/4 Row DX R-410A Coil										
80° F EDB / 67° F EWB										
CFM	Suct	APD	Total	Sens	LA Temp.					
	Temp.				FV	Cap	Cap	DB °F	WB °F	
1500	35 °F	0.12	92,253	55,935	45.9	44.9				
	40 °F						79,946	49,208	50.1	48.5
	45 °F						65,847	43,057	53.8	52.1
	50 °F						50,714	36,906	57.5	56.1
2000	35 °F	0.19	111,831	67,660	49.1	47.6				
	40 °F						96,738	60,143	52.5	50.6
	45 °F						79,806	52,625	55.9	53.8
	50 °F						60,957	45,107	59.4	57.1
2500	35 °F	0.28	126,819	78,809	51.2	49.6				
	40 °F						109,844	70,052	54.4	52.1
	45 °F						91,631	62,791	57.1	55.1
	50 °F						70,169	53,821	60.3	58.1

7.5 Ton W/4 Row DX R-410A Coil										
80° F EDB / 67° F EWB										
CFM	Suct	APD	Total	Sens	LA Temp.					
	Temp.				FV	Cap	Cap	DB °F	WB °F	
2500	35 °F	0.17	144,555	86,498	48.4	47.1				
	40 °F						121,997	76,887	51.9	50.3
	45 °F						98,055	65,781	55.9	54.1
	50 °F						72,209	55,102	59.8	57.8
3000	35 °F	0.24	162,678	99,184	49.8	48.1				
	40 °F						138,126	86,113	53.8	51.6
	45 °F						110,405	75,349	57	54.9
	50 °F						81,025	64,585	60.3	58.3
3500	35 °F	0.31	179,978	110,332	51.2	49.4				
	40 °F						151,909	98,073	54.4	52.4
	45 °F						121,530	83,721	58.1	55.5
	50 °F						88,718	71,761	61.3	58.9

10 Ton W/4 Row DX R-410A Coil										
80° F EDB / 67° F EWB										
CFM	Suct	APD	Total	Sens	LA Temp.					
	Temp.				FV	Cap	Cap	DB °F	WB °F	
3000	35 °F	0.16	177,987	106,104	47.7	46.2				
	40 °F						152,398	94,314	51.3	49.5
	45 °F						125,747	82,525	54.8	53.1
	50 °F						97,101	70,736	58.4	56.6
4000	35 °F	0.26	214,894	130,707	50.1	48.5				
	40 °F						183,001	117,551	53.1	51.4
	45 °F						150,815	102,857	56.5	54.6
	50 °F						115,963	88,133	59.8	57.7
5000	35 °F	0.38	245,589	151,851	52.2	50.2				
	40 °F						209,276	134,979	55.3	53.1
	45 °F						171,212	119,602	58.1	55.8
	50 °F						131,237	102,516	61.3	58.6

6 Ton W/4 Row DX R-410A Coil										
71° F EDB / 64° F EWB										
CFM	Suct	APD	Total	Sens	LA Temp.					
	Temp.				FV	Cap	Cap	DB °F	WB °F	
1500	35 °F	0.12	80,835	44,287	44.1	43.8				
	40 °F						68,357	37,341	48.2	47.6
	45 °F						54,447	30,652	52.3	51.4
	50 °F						38,879	24,758	55.9	55.3
2000	35 °F	0.19	97,826	52,898	46.8	46.1				
	40 °F						83,006	45,551	50.2	49.3
	45 °F						65,669	38,204	53.5	52.5
	50 °F						47,019	30,140	57.2	56.1
2500	35 °F	0.28	111,439	61,509	48.5	47.8				
	40 °F						94,485	52,966	51.6	50.7
	45 °F						75,457	44,423	54.8	53.6
	50 °F						54,040	35,880	57.9	56.8

7.5 Ton W/4 Row DX R-410A Coil										
71° F EDB / 64° F EWB										
CFM	Suct	APD	Total	Sens	LA Temp.					
	Temp.				FV	Cap	Cap	DB °F	WB °F	
2500	35 °F	0.17	124,947	67,660	46.3	45.8				
	40 °F						103,234	56,939	50.2	49.4
	45 °F						79,769	46,645	53.9	53.2
	50 °F						54,017	35,880	57.9	56.7
3000	35 °F	0.24	141,097	77,502	47.4	46.9				
	40 °F						116,335	65,149	51.1	50.4
	45 °F						89,436	53,308	54.8	53.7
	50 °F						60,460	40,304	58.5	57.2
3500	35 °F	0.31	156,663	83,960	49.1	48.1				
	40 °F						128,408	72,299	52.1	51.2
	45 °F						98,513	59,083	55.6	54.4
	50 °F						66,582	45,209	59.2	57.7

10 Ton W/4 Row DX R-410A Coil										
71° F EDB / 64° F EWB										
CFM	Suct	APD	Total	Sens	LA Temp.					
	Temp.				FV	Cap	Cap	DB °F	WB °F	
3000	35 °F	0.16	155,194	83,038	45.7	44.9				
	40 °F						130,564	71,505	49.2	48.5
	45 °F						104,299	58,639	53.1	51.9
	50 °F						75,160	47,362	56.6	55.6
4000	35 °F	0.26	187,312	100,875	47.9	47.2				
	40 °F						156,955	86,865	51.1	50.2
	45 °F						124,578	71,078	54.8	53.3
	50 °F						89,542	57,409	57.9	56.4
5000	35 °F	0.38	214,953	116,868	49.6	48.8				
	40 °F						178,468	100,636	52.6	51.4
	45 °F						141,638	84,405	55.6	54.4
	50 °F						102,080	68,173	58.5	57.2

Serpentines Comerciales "DX R-410A" Tipo A (Cont.)

15 Ton W/4 Row DX R-410A Coil							
85° F EDB / 71° F EWB							
CFM	Suct Temp.	APD FV	Total Cap	Sens Cap	LA Temp.		
					DB °F	WB °F	
5000	35 °F	0.16 266	350,703	198,624	48.7	47.6	
	40 °F		309,422	176,839	52.7	50.9	
	45 °F		264,620	157,191	56.3	54.6	
	50 °F		215,246	137,542	59.8	57.8	
6000	35 °F	0.21 320	397,053	222,971	50.9	49.6	
	40 °F		350,052	202,981	54.1	52.5	
	45 °F		298,513	180,428	57.5	55.8	
	50 °F		240,738	157,874	60.9	58.8	
7000	35 °F	0.28 373	438,936	248,173	52.6	50.8	
	40 °F		383,995	226,047	55.5	53.7	
	45 °F		327,091	200,931	58.8	56.6	
	50 °F		264,277	175,814	61.9	59.7	

15 Ton W/4 Row DX R-410A Coil							
80° F EDB / 67° F EWB							
CFM	Suct Temp.	APD FV	Total Cap	Sens Cap	LA Temp.		
					DB °F	WB °F	
5000	35 °F	0.16 266	298,240	178,762	47.3	46.1	
	40 °F		255,831	157,191	51.3	49.5	
	45 °F		210,424	137,542	54.8	52.9	
	50 °F		163,654	117,893	58.4	56.4	
6000	35 °F	0.21 320	336,568	202,981	49.5	47.6	
	40 °F		289,320	180,428	52.5	50.7	
	45 °F		236,488	157,874	55.9	53.9	
	50 °F		183,574	135,321	59.4	57.1	
7000	35 °F	0.28 373	369,257	226,047	50.5	48.8	
	40 °F		317,292	200,931	53.8	51.7	
	45 °F		260,571	175,814	56.9	54.9	
	50 °F		200,758	150,698	60.3	57.8	

15 Ton W/4 Row DX R-410A Coil							
71° F EDB / 64° F EWB							
CFM	Suct Temp.	APD FV	Total Cap	Sens Cap	LA Temp.		
					DB °F	WB °F	
5000	35 °F	0.16 266	260,014	138,396	45.7	44.9	
	40 °F		218,408	119,174	49.2	48.4	
	45 °F		174,542	99,953	52.7	51.9	
	50 °F		127,464	78,937	56.6	55.4	
6000	35 °F	0.21 320	291,870	158,694	46.8	46.1	
	40 °F		245,380	136,653	50.2	49.5	
	45 °F		196,650	111,947	53.9	52.7	
	50 °F		142,744	90,419	57.2	55.9	
7000	35 °F	0.28 373	323,410	176,532	47.9	47.3	
	40 °F		270,843	148,306	51.6	50.3	
	45 °F		214,533	124,386	54.8	53.4	
	50 °F		157,095	100,465	57.9	56.5	

20 Ton W/4 Row DX R-410A Coil							
85° F EDB / 71° F EWB							
CFM	Suct Temp.	APD FV	Total Cap	Sens Cap	LA Temp.		
					DB °F	WB °F	
7000	35 °F	0.23 336	455,679	257,143	51.4	50.1	
	40 °F		401,399	231,429	54.8	52.9	
	45 °F		341,802	205,715	58.1	56.1	
	50 °F		276,685	180,000	61.5	59.1	
8000	35 °F	0.30 384	495,438	283,627	52.6	50.9	
	40 °F		433,184	252,188	56.2	53.9	
	45 °F		369,418	229,635	58.8	56.8	
	50 °F		299,747	200,931	61.9	59.8	
9000	35 °F	0.37 432	532,885	307,547	53.8	52.1	
	40 °F		464,487	273,332	57.2	55.1	
	45 °F		395,400	246,038	60.1	57.7	
	50 °F		319,280	215,283	63.1	60.4	

20 Ton W/4 Row DX R-410A Coil							
80° F EDB / 67° F EWB							
CFM	Suct Temp.	APD FV	Total Cap	Sens Cap	LA Temp.		
					DB °F	WB °F	
7000	35 °F	0.23 336	384,955	231,429	49.8	47.9	
	40 °F		331,526	205,715	53.1	51.1	
	45 °F		271,175	180,000	56.5	54.3	
	50 °F		209,980	157,874	59.4	57.3	
8000	35 °F	0.30 384	418,401	252,188	51.2	49.2	
	40 °F		356,870	229,635	53.8	51.8	
	45 °F		294,478	200,931	56.9	54.9	
	50 °F		226,286	172,226	60.3	57.9	
9000	35 °F	0.37 432	446,704	276,792	51.9	49.9	
	40 °F		383,750	246,038	54.9	52.7	
	45 °F		314,706	215,283	58.1	55.4	
	50 °F		241,309	184,528	61.3	58.4	

20 Ton W/4 Row DX R-410A Coil							
71° F EDB / 64° F EWB							
CFM	Suct Temp.	APD FV	Total Cap	Sens Cap	LA Temp.		
					DB °F	WB °F	
7000	35 °F	0.23 336	337,135	180,838	47.4	46.6	
	40 °F		281,485	155,721	50.7	49.8	
	45 °F		225,308	130,605	53.9	52.9	
	50 °F		163,613	105,489	57.2	56.1	
8000	35 °F	0.30 384	364,992	196,830	48.5	47.6	
	40 °F		306,464	169,493	51.6	50.6	
	45 °F		242,089	142,155	54.8	53.5	
	50 °F		176,502	114,818	57.9	56.6	
9000	35 °F	0.37 432	391,178	210,362	49.6	48.5	
	40 °F		329,598	181,145	52.6	51.3	
	45 °F		258,769	151,928	55.6	54.1	
	50 °F		189,054	122,711	58.5	57.1	

Serpentines Comerciales "DX R-22" Tipo A

6 Ton W/4 Row DX R-22 Coil						
85° F EDB / 71° F EWB						
CFM	Suct Temp.	APD FV	Total Cap	Sens Cap	LA Temp. DB °F / WB °F	
1500	35 °F	0.12	110,011	62,753	46.3	45.9
	40 °F		96,929	56,920	49.9	49.6
	45 °F	225	83,107	50,934	53.6	53.3
	50 °F		68,763	45,320	57.1	56.7
2000	35 °F	0.19	133,727	77,404	49.2	48.6
	40 °F		117,222	70,088	52.3	51.9
	45 °F	300	99,933	63,173	55.7	55.4
	50 °F		82,233	56,458	58.8	58.5
2500	35 °F	0.28	153,529	90,031	51.6	51.0
	40 °F		134,008	82,076	54.6	54.0
	45 °F	375	113,708	74,183	57.5	56.9
	50 °F		93,153	66,586	60.4	59.7

6 Ton W/4 Row DX R-22 Coil						
80° F EDB / 67° F EWB						
CFM	Suct Temp.	APD FV	Total Cap	Sens Cap	LA Temp. DB °F / WB °F	
1500	35 °F	0.12	93,480	57,137	44.7	44.4
	40 °F		80,701	51,750	48.3	48.0
	45 °F	225	67,223	45,252	52.0	51.7
	50 °F		53,218	39,642	55.5	55.3
2000	35 °F	0.19	113,633	70,643	47.3	46.7
	40 °F		97,597	63,254	50.7	50.1
	45 °F	300	80,834	56,363	53.9	53.6
	50 °F		63,643	49,639	57.0	56.7
2500	35 °F	0.28	130,459	82,703	49.4	48.7
	40 °F		111,572	74,291	52.5	51.7
	45 °F	375	91,977	66,415	55.4	54.8
	50 °F		72,095	58,793	58.2	57.9

6 Ton W/4 Row DX R-22 Coil						
71° F EDB / 64° F EWB						
CFM	Suct Temp.	APD FV	Total Cap	Sens Cap	LA Temp. DB °F / WB °F	
1500	35 °F	0.12	81,995	44,771	43.3	43.3
	40 °F		69,426	38,851	47.0	47.0
	45 °F	225	56,188	32,828	50.7	50.7
	50 °F		42,418	27,224	54.2	54.2
2000	35 °F	0.19	99,671	54,860	45.6	45.6
	40 °F		83,961	47,765	48.9	48.9
	45 °F	300	67,564	40,516	52.2	52.2
	50 °F		50,727	33,793	55.3	55.3
2500	35 °F	0.28	119,430	63,669	47.4	47.4
	40 °F		95,984	55,189	50.5	50.5
	45 °F	375	76,878	47,335	53.4	53.4
	50 °F		57,463	39,707	56.3	56.3

7.5 Ton W/4 Row DX R-22 Coil						
85° F EDB / 71° F EWB						
CFM	Suct Temp.	APD FV	Total Cap	Sens Cap	LA Temp. DB °F / WB °F	
2500	35 °F	0.17	170,946	98,549	48.5	48.2
	40 °F		150,026	89,178	52.0	51.3
	45 °F	281	128,068	80,327	55.2	54.9
	50 °F		105,518	71,709	58.4	58.1
3000	35 °F	0.24	192,068	111,601	50.5	49.9
	40 °F		167,988	101,647	53.6	53.0
	45 °F	337	142,860	91,743	56.7	56.0
	50 °F		117,284	82,170	59.6	59.3
3500	35 °F	0.31	210,646	124,106	52.2	51.5
	40 °F		183,687	113,195	55.0	54.6
	45 °F	393	155,699	102,382	57.9	57.3
	50 °F		127,428	91,995	60.6	60.0

7.5 Ton W/4 Row DX R-22 Coil						
80° F EDB / 67° F EWB						
CFM	Suct Temp.	APD FV	Total Cap	Sens Cap	LA Temp. DB °F / WB °F	
2500	35 °F	0.17	145,259	89,896	46.7	46.4
	40 °F		124,908	80,868	50.0	49.7
	45 °F	281	103,592	71,598	53.5	53.1
	50 °F		81,664	62,973	56.7	56.3
3000	35 °F	0.24	163,207	102,432	48.4	47.7
	40 °F		139,864	91,877	51.6	51.0
	45 °F	337	115,557	82,001	54.7	54.4
	50 °F		90,770	72,406	57.6	57.3
3500	35 °F	0.31	178,993	114,059	49.8	49.2
	40 °F		152,934	102,525	52.9	52.2
	45 °F	393	125,943	91,731	55.7	55.1
	50 °F		98,622	81,304	58.5	57.8

7.5 Ton W/4 Row DX R-22 Coil						
71° F EDB / 64° F EWB						
CFM	Suct Temp.	APD FV	Total Cap	Sens Cap	LA Temp. DB °F / WB °F	
2500	35 °F	0.17	127,412	69,967	45.1	45.1
	40 °F		107,457	60,865	48.4	48.4
	45 °F	281	86,586	51,583	51.9	51.9
	50 °F		65,091	42,962	55.1	55.1
3000	35 °F	0.24	143,155	79,198	46.5	46.5
	40 °F		120,323	69,079	49.7	49.7
	45 °F	337	96,587	58,690	52.9	52.9
	50 °F		72,349	49,092	55.8	55.8
3500	35 °F	0.31	157,001	87,622	47.8	47.8
	40 °F		131,567	76,009	50.9	50.9
	45 °F	393	105,268	65,245	53.7	53.7
	50 °F		78,607	54,806	56.5	56.5

10 Ton W/4 Row DX R-22 Coil						
85° F EDB / 71° F EWB						
CFM	Suct Temp.	APD FV	Total Cap	Sens Cap	LA Temp. DB °F / WB °F	
3000	35 °F	0.16	208,809	120,020	47.9	47.6
	40 °F		183,547	108,547	51.5	51.2
	45 °F	266	156,754	97,726	54.8	54.5
	50 °F		129,286	87,167	58.1	57.8
4000	35 °F	0.26	250,954	146,758	51.1	50.5
	40 °F		219,271	133,452	54.1	53.5
	45 °F	355	186,267	120,531	57.1	56.5
	50 °F		152,760	108,067	60.0	59.6
5000	35 °F	0.38	285,510	170,406	53.4	52.8
	40 °F		248,375	155,632	56.2	55.8
	45 °F	444	209,984	141,040	58.9	58.2
	50 °F		171,437	127,085	61.4	60.8

10 Ton W/4 Row DX R-22 Coil						
80° F EDB / 67° F EWB						
CFM	Suct Temp.	APD FV	Total Cap	Sens Cap	LA Temp. DB °F / WB °F	
3000	35 °F	0.16	179,433	109,435	46.2	45.9
	40 °F		152,722	98,369	49.6	49.3
	45 °F	266	126,795	87,037	53.1	52.8
	50 °F		100,059	76,473	56.4	56.1
4000	35 °F	0.26	213,244	134,476	48.9	48.2
	40 °F		182,561	120,708	52.0	51.4
	45 °F	355	150,668	107,819	55.0	54.4
	50 °F		118,226	95,320	57.9	57.6
5000	35 °F	0.38	242,608	155,943	51.5	50.5
	40 °F		206,792	141,191	53.8	53.2
	45 °F	444	169,853	126,608	56.5	55.9
	50 °F		132,681	112,581	59.1	58.5

10 Ton W/4 Row DX R-22 Coil						
71° F EDB / 64° F EWB						
CFM	Suct Temp.	APD FV	Total Cap	Sens Cap	LA Temp. DB °F / WB °F	
3000	35 °F	0.16	155,632	85,323	44.6	44.6
	40 °F		131,385	74,174	48.1	48.1
	45 °F	266	105,981	62,817	51.6	51.6
	50 °F		79,753	52,259	54.8	54.8
4000	35 °F	0.26	187,044	103,757	47.0	47.0
	40 °F		157,055	89,861	50.2	50.2
	45 °F	355	125,935	77,011	53.1	53.1
	50 °F		94,233	64,506	56.0	56.0
5000	35 °F	0.38	212,801	119,810	48.8	48.8
	40 °F		177,901	104,122	51.7	51.4
	45 °F	444	141,970	89,571	54.4	54.4
	50 °F		105,754	75,519	57.0	57.0

Serpentines Comerciales "DX R-22" Tipo A (Cont.)

15 Ton W/4 Row DX R-22 Coil						
85° F EDB / 71° F EWB						
CFM	Suct Temp.	APD FV	Total Cap	Sens Cap	LA Temp.	
					DB °F	WB °F
5000	35 °F	0.16 266	348,016	200,034	47.9	47.6
	40 °F		305,721	180,912	51.5	51.2
	45 °F		261,256	162,876	54.8	54.5
6000	35 °F	0.21 320	391,910	227,877	49.8	49.2
	40 °F		343,123	206,459	53.1	52.5
	45 °F		292,125	186,224	56.2	55.9
7000	35 °F	0.28 373	430,662	252,442	51.6	51.0
	40 °F		375,936	230,126	54.5	53.9
	45 °F		319,020	207,984	57.5	56.8
	50 °F		261,375	186,666	60.3	59.7

15 Ton W/4 Row DX R-22 Coil						
80° F EDB / 67° F EWB						
CFM	Suct Temp.	APD FV	Total Cap	Sens Cap	LA Temp.	
					DB °F	WB °F
5000	35 °F	0.16 266	295,721	182,392	46.2	45.9
	40 °F		254,538	163,949	49.6	49.3
	45 °F		211,326	145,061	53.1	52.8
6000	35 °F	0.21 320	333,020	208,070	47.9	47.2
	40 °F		285,679	186,484	51.2	50.6
	45 °F		236,295	166,312	54.3	54.0
7000	35 °F	0.28 373	365,949	231,885	49.3	48.7
	40 °F		312,997	208,286	52.4	51.8
	45 °F		258,050	186,191	55.3	54.7
	50 °F		202,288	164,804	58.2	57.9

15 Ton W/4 Row DX R-22 Coil						
71° F EDB / 64° F EWB						
CFM	Suct Temp.	APD FV	Total Cap	Sens Cap	LA Temp.	
					DB °F	WB °F
5000	35 °F	0.16 266	259,388	142,205	44.6	44.6
	40 °F		218,975	123,623	48.1	48.1
	45 °F		176,635	104,695	51.6	51.6
6000	35 °F	0.21 320	292,104	161,204	46.1	46.1
	40 °F		245,765	140,488	49.3	49.3
	45 °F		197,505	119,274	52.6	52.6
7000	35 °F	0.28 373	320,987	178,550	47.4	47.4
	40 °F		269,267	154,758	50.5	50.5
	45 °F		215,689	132,727	53.4	53.4
	50 °F		161,235	111,322	56.2	56.2

20 Ton W/4 Row DX R-22 Coil						
85° F EDB / 71° F EWB						
CFM	Suct Temp.	APD FV	Total Cap	Sens Cap	LA Temp.	
					DB °F	WB °F
7000	35 °F	0.23 336	448,923	262,016	50.3	49.7
	40 °F		392,674	237,486	53.6	52.9
	45 °F		333,969	214,336	56.6	56.0
8000	35 °F	0.30 384	486,532	285,950	51.9	51.3
	40 °F		424,472	260,743	54.8	54.2
	45 °F		359,991	235,750	57.7	57.1
9000	35 °F	0.37 432	520,459	309,640	53.1	52.5
	40 °F		453,020	282,700	55.9	55.3
	45 °F		383,231	256,071	58.6	58.0
	50 °F		313,060	230,578	61.3	60.6

20 Ton W/4 Row DX R-22 Coil						
80° F EDB / 67° F EWB						
CFM	Suct Temp.	APD FV	Total Cap	Sens Cap	LA Temp.	
					DB °F	WB °F
7000	35 °F	0.23 336	381,466	239,322	48.3	47.7
	40 °F		326,932	214,647	51.6	51.0
	45 °F		270,142	191,562	54.6	54.3
8000	35 °F	0.30 384	413,424	262,734	49.6	48.9
	40 °F		353,407	236,086	52.7	52.0
	45 °F		291,191	211,141	55.5	54.9
9000	35 °F	0.37 432	442,253	283,264	50.8	50.2
	40 °F		377,176	256,371	53.6	53.0
	45 °F		309,989	229,767	56.3	55.7
	50 °F		242,289	204,151	59.0	58.3

20 Ton W/4 Row DX R-22 Coil						
71° F EDB / 64° F EWB						
CFM	Suct Temp.	APD FV	Total Cap	Sens Cap	LA Temp.	
					DB °F	WB °F
7000	35 °F	0.23 336	334,597	185,071	46.5	46.5
	40 °F		281,256	161,412	49.6	49.6
	45 °F		225,796	137,130	52.8	52.8
8000	35 °F	0.30 384	362,628	202,059	47.6	47.6
	40 °F		304,032	175,212	50.7	50.7
	45 °F		243,389	150,336	53.6	53.6
9000	35 °F	0.37 432	387,916	217,918	48.6	48.6
	40 °F		324,479	189,305	51.5	51.5
	45 °F		259,102	162,762	54.2	54.2
	50 °F		193,118	137,105	56.9	56.9