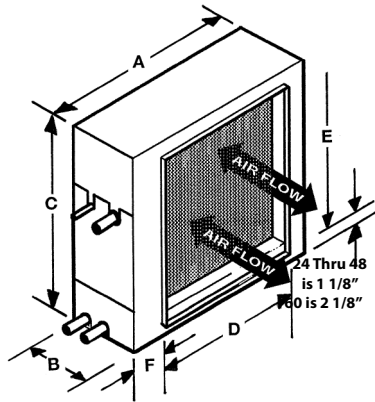


CH Series™

Cased Horizontal Slab Coils

Designed for Horizontal Furnaces 1 1/2 - 5 Tons



Description:

The CH cased horizontal slab coil series is designed as a high efficiency horizontal coil to be installed on new and existing horizontal gas furnaces. (Also multiposition furnaces in horizontal position) The CH series can be AHRI rated with many outdoor unit brands to provide a capacity range from 18,000 to 60,000 BTU/HR. These coils may be used in horizontal applications with transitions to furnace. These units are U.L. & ULC approved.

Physical Dimensions

Model No.	A	B	C	D	E	F
CHOXXS346	22 1/4	7	23 1/2	15 3/8	21	5 1/2
CHOXS566	25 1/4	7	23 1/2	18 3/8	21	5 1/2
CHOXS766	28 1/4	7	23 1/2	21 3/8	21	5 1/2
CHOXSA66	35	7	23 1/2	28 1/8	21	5 1/2
CHOXSA96	35	7	23 1/2	28 1/8	21	5 1/2
CHOXSB67	37 1/4	7	25 1/2	30 3/8	21	5 1/2
CHOXSB97	37 1/4	7	25 1/2	30 3/8	21	5 1/2

Note: Evaporator coils equipped with a 15%-bleed type expansion valve must be used with condensing units equipped with hard start components. Standard coils shown in bold type.

- Compatible with AC and heat pump systems.
- Check valve flowrator pistons.
- Bi-directional refrigerant circuiting.
- R-32 and R-454B models equipped with refrigerant leak detection system.
- Dual 3/4 MPT drains.
- Leak tested 500 psi and factory sealed.
- Vacuum formed high impact UL approved PVC drain pans.
- Schrader port for pressure verification.
- Custom labels
- Can be rated with most outdoor AC & HP units.
- Fits many existing horizontal furnaces and plenums.
- Refrigeration connections are SWAGED & factory sealed with copper caps.

Connections:

Tons	Liquid	Suction
1 1/2 - 3	3/8	3/4
3 1/2 - 5	3/8	7/8

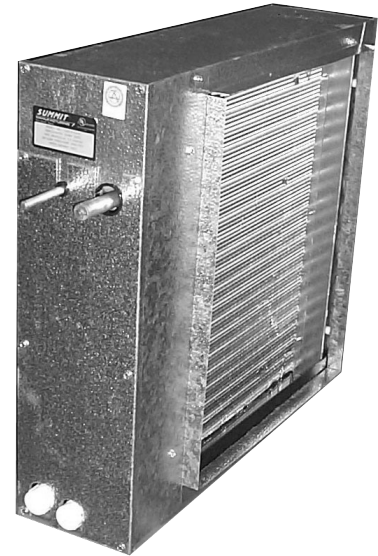
Options:

- Factory installed thermal expansion valve (TXV)
- Field installed screw-in type TXV kit

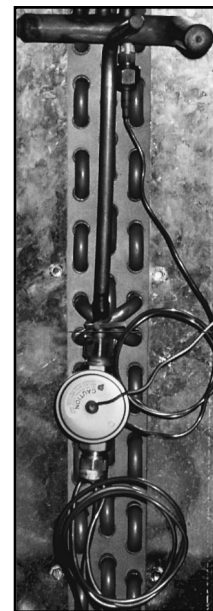
Summit™
Residential Products

All Technical Specifications Subject to Change Without Notice.

For more information contact Customer Service at (817) 624-0820 or your Summit Representative.



CH024S346 shown



Field installed TXV Kit shown (Optional)

Spec.CH00-010101
4.28.25

AHRI



UL LISTED

Associate Member