



AHW1-2 Wall Mount Air Handler

Standard Features:

- Compact for easy replacement of existing units.
Space saving design for new construction.
- High efficiency constant torque ECM motor.
- Equipped with refrigerant leak detection system.
- Electric heat models are 208/230/1/60
- Hot water heat models are 115/1/60.
- 1" foil faced insulation.
- Meets ASHRAE standard 193 low leak requirements.
- Galvanized steel blower wheels.
- Control transformer.
- Primary and secondary condensate drain pans.
- Easy access for service and maintenance.
- High efficiency copper tubes with aluminum fin coils.
- Standard Warranty
5 Year Coil
1 Year Parts

AHW1-2 WALL MOUNT AIR HANDLER

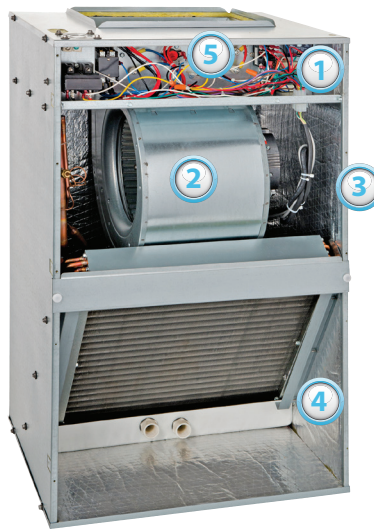
These air handlers are designed for vertical mounting in a wall or closet application, and will handle up to 1200 CFM and up to 3 tons of cooling with a DX cooling or heat pump coil. For DX cooling requirements these air handlers can be matched with most manufacturer's condensing units and heat pumps. The front of the case is open to accommodate a louvered/filtered access panel.

Field Installed Options:

- Louvered access door panels.

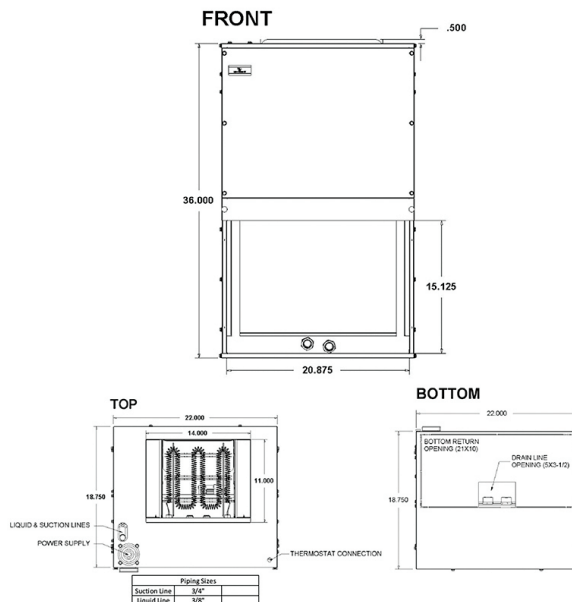
Factory Installed Options:

- R-32 or R-454B thermostatic expansion valve. Expansion valves are suitable for heat pump application.
- Add-on 3KW-10KW electric heat strips
- Fully painted cabinet.



- ① Circuit Breakers— Optional
- ② High Efficiency Constant Torque ECM Blower Motor
- ③ Fully Insulated Cabinet and Door
- ④ Universal Disposable Filter
- ⑤ Add-on Electric Heat 3kW-10kW

Unit Dimensional Data AHW1



Unit Dimensional Data AHW2 (Hot Water)

