



Cased Horizontal Concealed Ceiling Mounted Air Handler

Standard Features

High efficiency

- Advanced engineered High Efficiency Slab Coil Design
- High Efficiency Constant Torque ECM Motor
- Meets ASHRAE 193 standard for < 2% airflow leak loss

DX Models are A2L Refrigerant Class Compliant

- Equipped with refrigerant leak detection system
- Available in R-32 and R-454B models

Ease of installation

- Space saving design
- Easy access for service and maintenance
- Pre-wired for heating and cooling
- Primary and secondary drain connections

Multiple cooling options

- DX cooling coil
- Chilled Water coil

Multiple heating options

- Heat Pump
- Electric heat models are 208/240V-1ph-60Hz
- Hot water heat models are 115V-1ph-60Hz
- Water circulating pump pre-installed on hot water models

Field installed options

- Louvered or non-louvered ceiling access panels

Standard Warranty

- 5 Year Coil
- 1 Year Parts

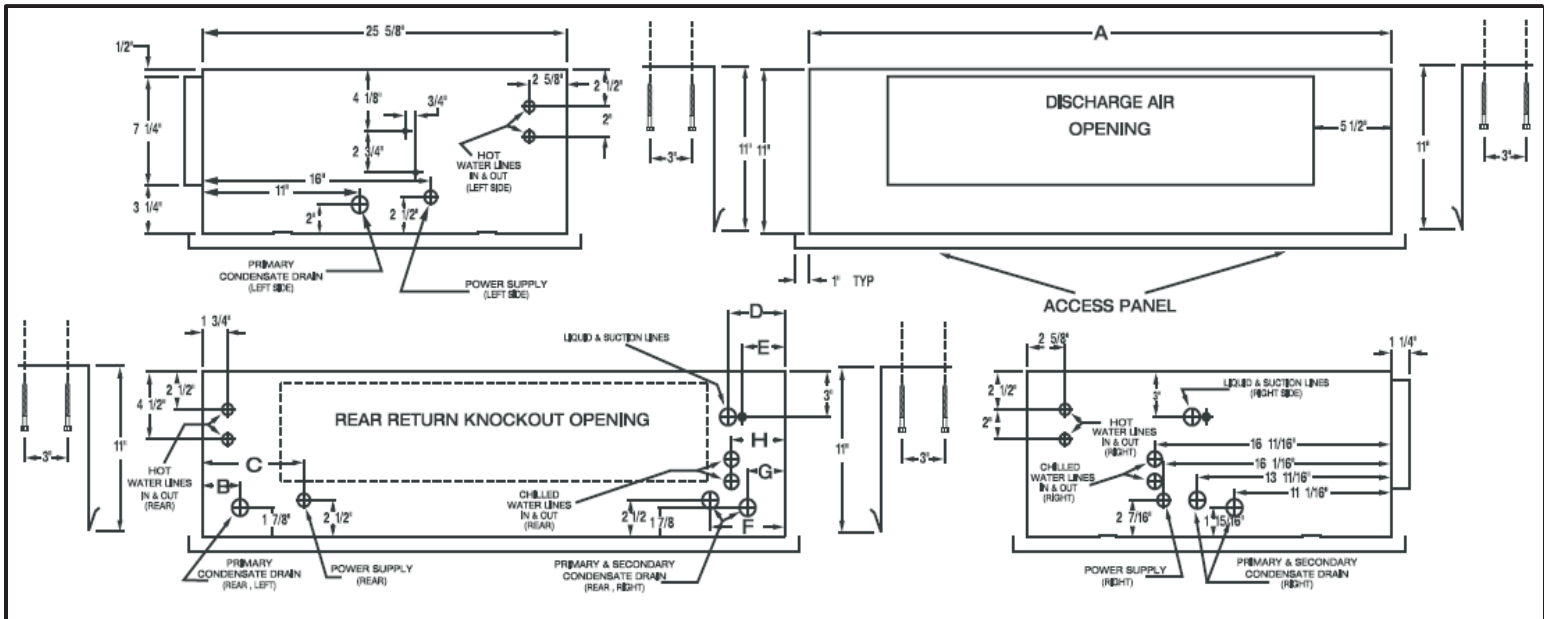
Horizontal Concealed Ceiling Mounted Air Handler

CEHX DX Cooling/Electric Heat
CDXW DX Cooling/ Hot Water Heat
CCWE Chilled Water Cooling/ Electric Heat
CCWW Chilled Water Cooling/ Hot Water Heat

The **C Series Concealed Air Handlers** are engineered to achieve or exceed today's demanding energy rating requirements. Specifically designed for horizontal mounting into a furred down ceiling. Advanced engineering allows these units to efficiently handle up to 1200 CFM and up to 3 tons of cooling with a DX cooling coil, heat pump coil or Chilled Water coil. These units are available with up to 10 KW of electric heat or up to 51,000 MBTUH of hot water heating capacity. For DX cooling requirements, these air handlers can be matched with most manufacturer's condensing units and heat pumps designed for R-32 or R-454B refrigerants..

The **"C" Series** cased concealed ceiling unit has been designed to meet ASHRAE Standard 193 to not exceed 2% air leak loss. Unit cases have a knock-out for rear return air. Return air duct flanges and filter racks are field supplied.

CASED UNITS



Model	A	B	C	D	R	F	G	H
18, 19, 24	41"	2.625"	7.125"	4.0"	3.0"	5.25"	2.625"	3.75"
29	45"	2.625"	10.50"	2.5"	1.50"	4.625"	2.625"	2.867"
25,30,31	47"	2.625"	10.50"	2.5"	1.50"	4.625"	2.625"	2.687"
34, 35	53.5"	3.25"	13.75"	3.25"	2.75"	5.875"	3.25"	3.937"
36, 37	60.5"	3.25"	17.50"	3.25"	2.75"	5.875"	3.25"	3.937"

Discharge Air	
18, 19, 24	30" x 7.25"
29	36" x 7.25"
25, 30, 31	38" x 7.25"
34, 35	42" x 7.25"
36, 37	49" x 7.25"

Rear Return Knockout	
Model	Opening
18, 19, 24	30" x 6.5"
29	36" x 6.5"
25, 30, 31	38" x 6.5"
34, 35	42" x 6.5"
36, 37	49" x 6.5"

